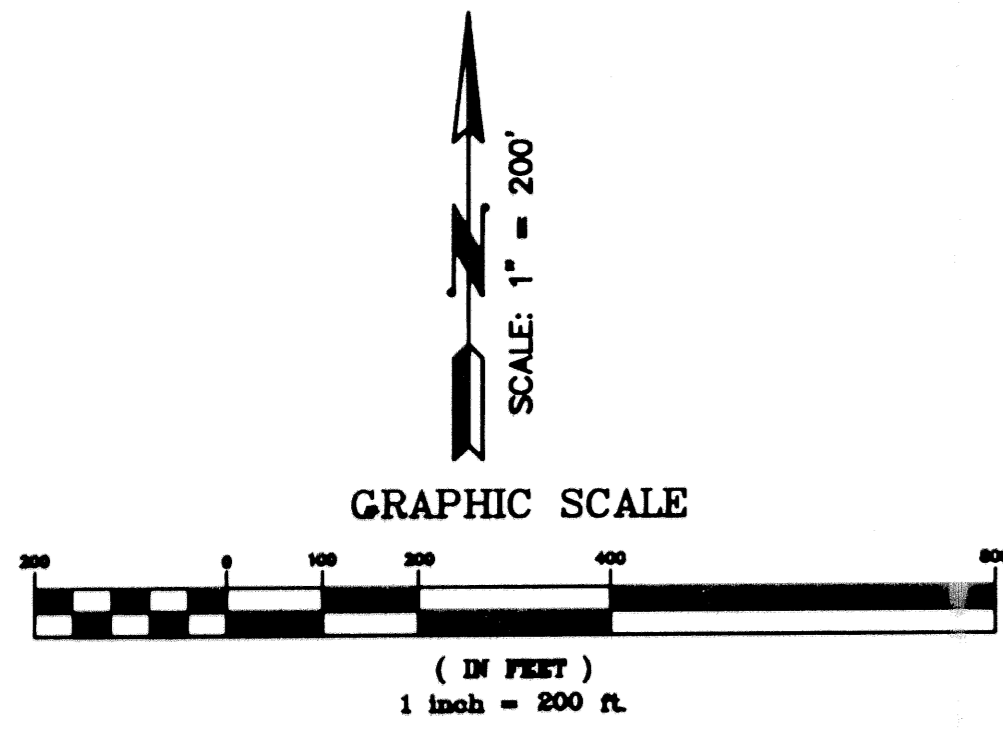


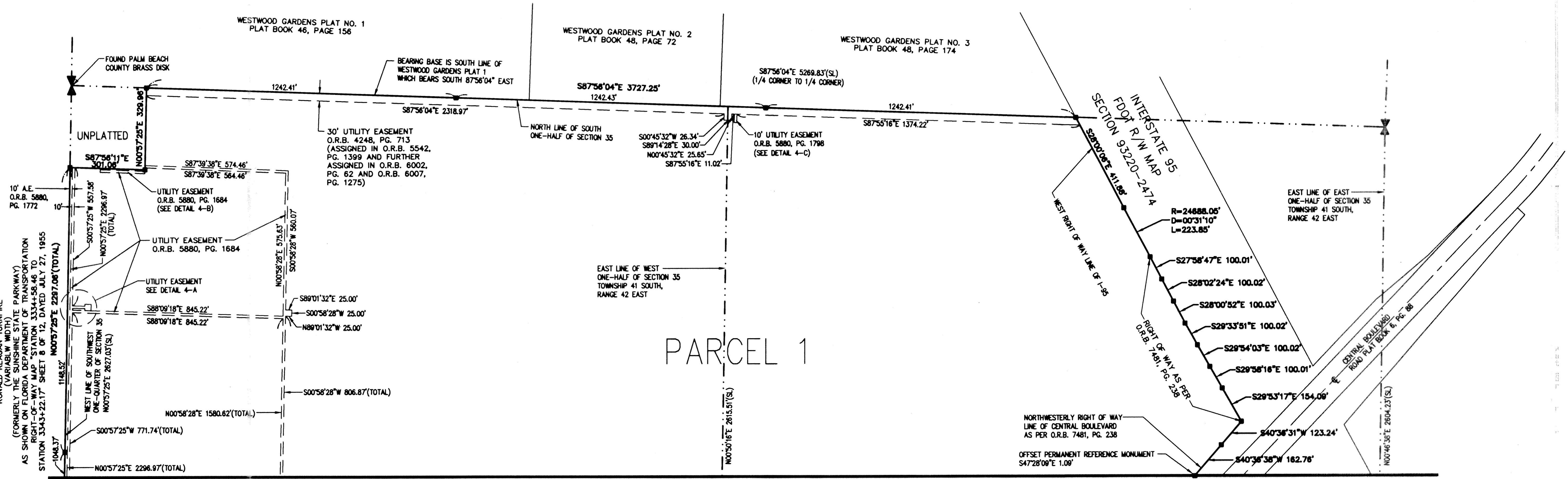
OLD PALM PLAT 1

LYING IN SECTIONS 35 AND 36, TOWNSHIP 41 SOUTH, RANGE 42 EAST
AND SECTIONS 1 AND 2, TOWNSHIP 42 SOUTH, RANGE 42 EAST
CITY OF PALM BEACH GARDENS, PALM BEACH COUNTY, FLORIDA
SHEET NO. 4 OF 4

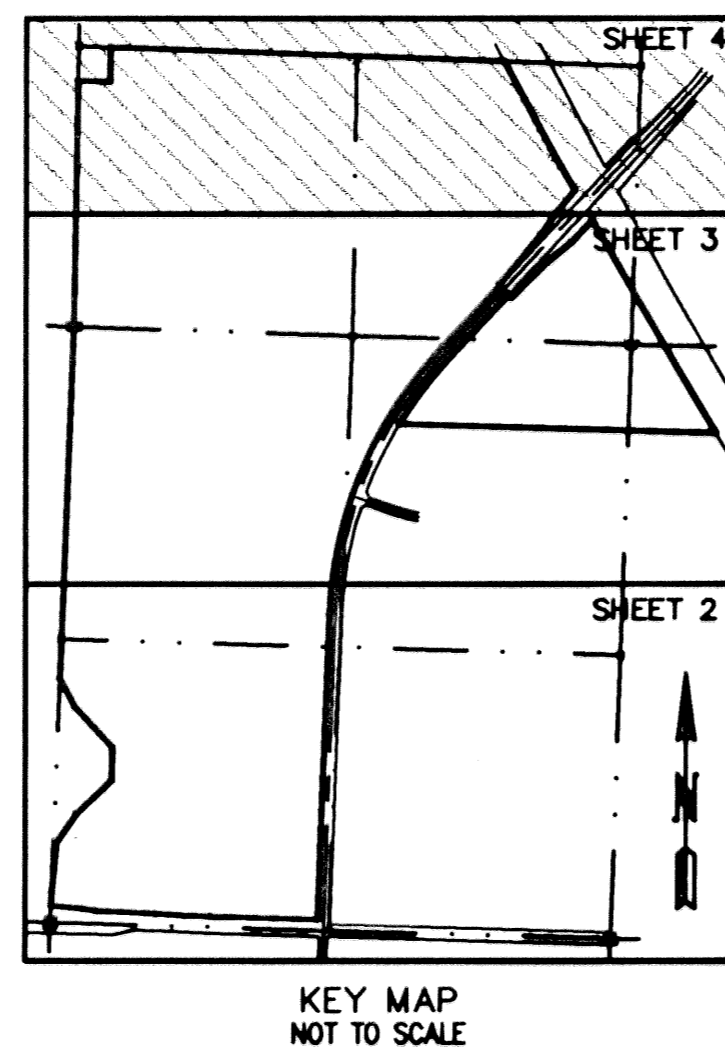
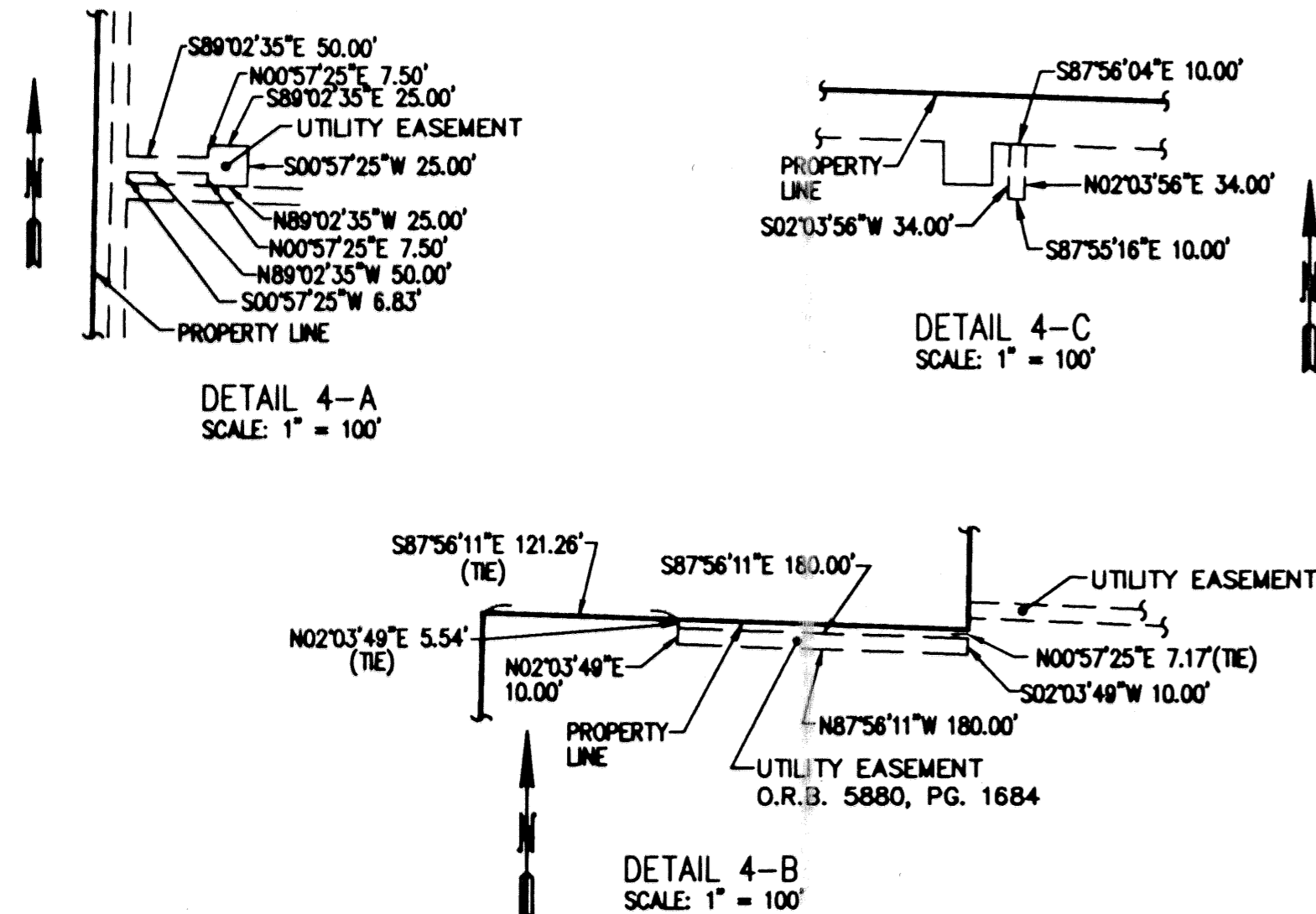
AUGUST 2002



STATE OF FLORIDA
COUNTY OF PALM BEACH
This plat was filed for
record at _____ M. this _____ day
of _____ 2002, and duly
recorded in Plat Book No. _____
on Pages _____ thru _____
DOROTHY H. WILKEN
Clerk Circuit Court
By _____ D. C.



MATCHLINE (SEE SHEET 3)



- LEGEND
- ⊕ CENTERLINE
 - ∠ CENTRAL ANGLE
 - R RADIUS
 - L ARC LENGTH
 - CH CHORD BEARING
 - O.R.B. OFFICIAL RECORD BOOK
 - P.B. PLAT BOOK
 - P.G. PAGE
 - R/W RIGHT-OF-WAY
 - PERMANENT REFERENCE MONUMENT
 - SET-MARKED LB4431
 - S.F. SQUARE FEET
 - U.E. UTILITY EASEMENT
 - D.E. DRAINAGE EASEMENT
 - A.E. ACCESS EASEMENT
 - FPL FLORIDA POWER & LIGHT
 - (SL) SECTION LINE BEARING AND DISTANCE

THIS INSTRUMENT PREPARED BY:
David C. Lidberg, P.S.M.
Florida License Number LS3613
LIDBERG LAND SURVEYING, INC.
675 West Indiantown Road, Suite 200
Jupiter, Florida 33418
Certificate of Authorization Number LB4431

LIDBERG LAND SURVEYING, INC.
675 West Indiantown Road, Suite 200,
Jupiter, Florida 33458 TEL. 561-748-8454

CAD E:\2114.00\PLAT\OldPalm-Plat-1\P31-SH4.DWG				
REF				
FLD	B.D./M.W.	FB.	PC.	JOB 21-114.00
OFF	S.F.B.			DATE 08/08/02
CKD	D.C.L.	SHEET 4	OF 4	DWG

Last Update: 8/26/2002 Plotted: 8/26/2002 0:20 pm By: Jkavis Plot Scale: 1:2000 Xref Dwg's: X-P31PLAT, RONALD REAGAN TURNPIKE (VARIABLE WIDTH) (FORMERLY THE SUNSHINE STATE PARKWAY) AS SHOWN ON FLORIDA DEPARTMENT OF TRANSPORTATION RIGHT-OF-WAY MAP STATION 3334+56.46 TO STATION 3343+22.17 SHEET 8 OF 12, DATED JULY 27, 1955